

STANDARD PRODUCT RANGE

REVISION 3 - JANUARY 2013

2013



**BOX
CLEVER**
ENGINEERING LTD

Box Clever Engineering design and manufacture high quality acoustic plant enclosures for the commercial and industrial refrigeration industry, food processing and building services industries.

Box Clever also encompasses services including Acoustic Modular Enclosures, Specialist Attenuation and Structural Steel and Civil Ground Works.

ACCREDITATIONS

- ✓ European standard - DIN 3745 Class 1 certification on our package unit range.
- ✓ UKAS verified performance of our enclosures.

KEY BENEFITS

- ✓ Extensive knowledge and understanding of plant applications
- ✓ Flexible designs
- ✓ Repeatable high quality manufacturing
- ✓ Competitively priced
- ✓ Comprehensive range of standard products, solutions and services



A full comprehensive range, plus offering client specials. Products are designed in house and manufactured to be weatherproof, durable and corrosion resistant.



Designed to provide a lower cost alternative to converted transport containers or masonry built plant rooms. Innovative design, unrivalled quality, structurally certified with fast and easy site erection even in restricted spaces.



Design and manufacture of noise control solutions that work. Certified performance on products from acoustic screens, louvres, silencers through to full machinery containment.



We provide solutions for applications including supporting commercial and industrial plant. We are also able to provide a full list of associated Civil Works.



Sustainable plant housings and acoustic fencing manufactured from 100% recycled or sustainably sourced materials FSC® approved & PEFC certified. Providing a negative CO2e Carbon Footprint, reduced weight and ease of 'end of life' recyclability.

Phone: + 44 (0)1732 523 550

Fax: + 44 (0)1732 523 404

Email: info@boxcleverengineering.co.uk

www.boxcleverengineering.co.uk



- 4 STANDARD PLANT ENCLOSURES - PRIMARILY FOR SCROLL COMPRESSORS**
- 5 STANDARD PLANT ENCLOSURES WITH REINFORCED BASE - PRIMARILY FOR SEMI-HERMETIC COMPRESSORS**
- 6 INTEGRATED PACK FRAMES FOR SCROLL COMPRESSORS**
- 7 HEAVY DUTY INTEGRATED PACK FRAME FOR SEMI-HERMETIC COMPRESSORS**
- 8 LOW NOISE CONDENSING UNIT HOUSING**
- 9 COMPRESSOR PACK CRADLE (FLAT PACKED)**
- 10 STRUCTURAL STEEL BASE HOUSINGS (FLAT PACKED)**
- 11 TYPE 1 'PLANT ONLY' ENCLOSURE WITH REMOVABLE BASE**
- 12 TYPE 3' PACKAGED UNIT HOUSINGS WITH INTEGRATED CONDENSER COIL AND EC FANS**
- 13 TYPE 4' PACKAGED UNIT HOUSINGS WITH INTEGRATED CONDENSER COIL AND FANS**
- 14 OPTIONAL EXTRAS**
- 15 TERMS AND CONDITIONS**

Prices subject to variation due to commodity prices, prices are in UK Pounds Sterling and exclude VAT. Prices based on 10 off purchase (unless otherwise stated), lower volume prices confirmed on application. Please refer to our terms and conditions which are deemed to form part of our trading agreement. Dimensions stated are for guide purpose only, accurate details are available on request.

Standard Plant Enclosures - Primarily for Scroll Compressors

Description	Model Reference No.	External Dimentions (mm)			Overall size inc. Inlet/ extract ventilation baffles (mm)		No. of Doors	Extract Fans	Cost each (£) (ex works) 10 off
		Width	Depth	Height	Width	Depth			
2 Door	ABXC0019	2400	740	2100	2650	740	2	1	POA
2 Door	ABXC005	2400	1000	2300	2650	1000	2	2	POA
2 Door	ABXC006	2400	1300	2100	2650	1300	2	2	POA
2 Door with Sliding Roof Canopy	ABXC0039	2300	700	2035	2556	700	2	1	POA
2 Door	ABXC00136	2000	885	2242	2250	885	2	1	POA

KEY PRODUCT FEATURES:

- CAD designed, CNC machined zintec coated steel with polyester powder coated finish
- Backward curve centrifugal fan(s) for forced ventilation
- Sloping roof with 25mm perimeter overhang
- High quality door furniture and removable door mullions for ease of plant installation (where applicable)
- Design offers ease of access for service and maintenance
- British designed and manufactured
- Weatherproof, durable and corrosion resistant - Lined with 25mm high density Class O rated acoustic foam as standard
- Acoustic performance independently certified (report available on request)



Standard Plant Enclosures with Reinforced Base - Primarily for Semi-Hermetic Compressors

Description	Model Reference No.	External Dimentions (mm)			Overall size inc. Inlet/ extract ventilation baffles (mm)		No. of Doors	Extract Fans	Cost each (£) (ex works) 10 off
		Width	Depth	Height	Width	Depth			
GPR Reinforced Base	ABXC0062	3400	1300	2250	3650	1350	3	2	POA
GPR Reinforced Base	ABXC0098	2300	1160	2200	2550	1160	2	1	POA
GPR Reinforced Base	ABXC00130	4500	2000	2380	4750	2000	3	2	POA
GPR Reinforced Base	ABXC00142	4000	2000	2380	4250	2050	3	2	POA
GPR Reinforced Base	ABXC00138	3000	2000	2380	3250	2050	2	2	POA

KEY PRODUCT FEATURES:

- CAD designed, CNC machined zintec coated steel with polyester powder coated finish
- Reinforced structural legs to support the point load of the pack and to aid manoeuvrability of the unit - Increased structural integrity for semi-hermetic compressors
- Backward curve centrifugal fan(s) for forced ventilation
- Sloping roof with 25mm perimeter overhang
- High quality door furniture and removable door mullions for ease of plant installation
- Design offers ease of access for service and maintenance
- British designed and manufactured
- Weatherproof, durable and corrosion resistant - Lined with 25mm high density Class O rated acoustic foam as standard
- Acoustic performance independently certified (report available on request)



Integrated Pack Frames for Scroll Compressors

Description	Model Reference No.	External Dimentions (mm)			Overall size inc. Inlet/ extract ventilation baffles (mm)		No. of Doors	Extract Fans	Cost each (£) (ex works) 10 off
		Width	Depth	Height	Width	Depth			
3 Scroll (single shelf)	ABXC0072	1560	600	1080	1810	650	2	1	POA
4 Scroll (single shelf)	ABXC0079	1920	600	1400	2170	650	2	1	POA
6 Scroll (double shelf)	ABXC0064	1560	600	1770	1810	650	2	1	POA
8 Scroll (double shelf)	ABXC0086	1980	600	1770	2230	650	2	1	POA
10 Scroll (double shelf)	ABXC0125	2320	790	1770	2570	840	2	1	POA

KEY PRODUCT FEATURES:

- CAD designed, CNC machined zintec coated steel with polyester powder coated finish
- Backward curve centrifugal fan(s) for forced ventilation
- Internal shelf/shelves to accommodate compressor fixings, cable raceways, access points and bracketry
- Integrated control panel and backplate, ensuring optimisation of space
- Sloping roof with 25mm perimeter overhang
- High quality door furniture
- Design offers ease of access for service and maintenance
- British designed and manufactured
- Weatherproof, durable and corrosion resistant - Lined with 25mm high density Class O rated acoustic foam as standard
- Acoustic performance independently certified (report available on request)





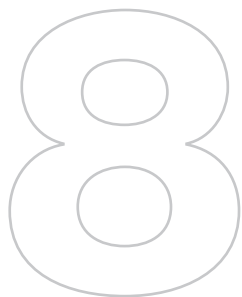
Heavy Duty Integrated Pack Frame for Semi-Hermetic Compressors

Description	Model Reference No.	External Dimentions (mm)			Overall size inc. Inlet/ extract ventilation baffles (mm)		No. of Doors	Extract Fans	Cost each (£) (ex works) 10 off
		Width	Depth	Height	Width	Depth			
6 Semi-Hermetic	ABXC0096	1987	790	1817	2112	790	2	2	POA
8 Semi-Hermetic	ABXC0097	2870	790	1817	2995	790	2	2	POA

KEY PRODUCT FEATURES:

- CAD designed, CNC machined zintec coated steel with polyester powder coated finish
- Backward curve centrifugal fan(s) for forced ventilation
- Heavy duty base and internal shelf to support semi-hermetic compressors
- Integrated control panel and back plate
- Sloping roof with 25mm perimeter overhang
- High quality door furniture
- Design offers ease of access for service and maintenance
- British designed and manufactured
- Weatherproof, durable and corrosion resistant - Lined with 25mm high density Class O rated acoustic foam as standard
- Acoustic performance independently certified (report available on request)





Low Noise Condensing Unit Housing

Description	Model Reference No.	External Dimentions (mm)			Overall size inc. Inlet/ extract ventilation baffles (mm)		No. of Doors	Extract Fans	Cost each (£) (ex works) 10 off
		Width	Depth	Height	Width	Depth			
Low Noise Housing	ABXC0061	1900	1680	1960	1900	1680	2+2	n/a	POA

KEY PRODUCT FEATURES:

- CAD designed, CNC machined zintec coated steel with polyester powder coated finish
- High quality door furniture
- Airways sized to balance the airflow against acoustic performance and fan power
- Lined with high density Class O rated acoustic foam as standard
- Ability to provide certified acoustic performance thus enhancing the smooth application with planning authorities.
- Potential for reduced project lead times and handover
- Significant cost avoidance
- Innocuous looking, therefore 'visually quiet'
- The plant is in a locked steel box, therefore in venerable areas no additional needs for providing security to equipment required.

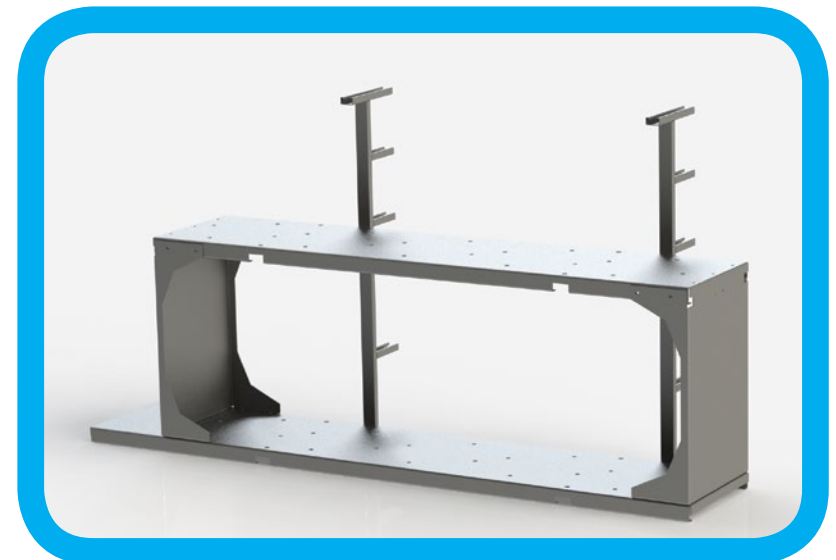


9



Compressor Pack Cradle (Flat Packed)

Description	Model Reference No.	External Dimensions (mm)			Cost each (£) (ex works) 10 off
		Width	Depth	Height	
6 Scroll Compressor	ABXC0031	1080	390	650	POA
8 Scroll Compressor	ABXC0032	1370	390	650	POA
10 Scroll Compressor	ABXC0033	2180	390	650	POA

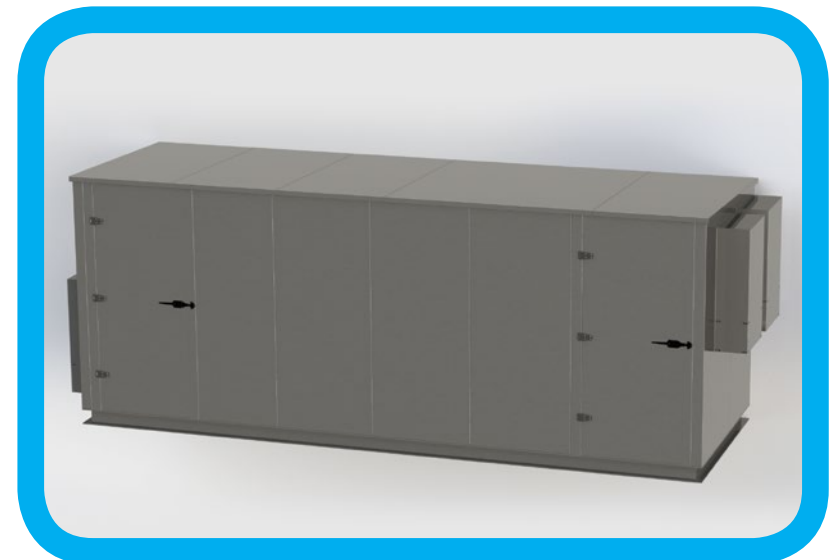


Structural Steel Base housings (Flat Packed)

Description	Model Reference No.	External Dimensions (mm)			Overall size inc. Inlet/ extract ventilation baffles (mm)		No. of Doors	Extract Fans	Cost each (£) (ex works)
		Width	Depth	Height	Width	Depth			
Heavy Duty Plant Housing	ABXC00140	4800	1755	2400	5400	1755	2	2	POA
Heavy Duty Plant Housing	ABXC00156	6150	2000	2400	6750	2000	2	2	POA

KEY PRODUCT FEATURES:

- Base Constructed from mild steel structural members
- High quality heavy duty door furniture
- Lined with 50mm high density foil faced acoustic foam
- Weatherproof, durable and corrosion resistant
- British designed and manufactured
- Sloping roof with 25mm perimeter overhang
- Design offers ease of access for service and maintenance
- Plate mounted extract fans



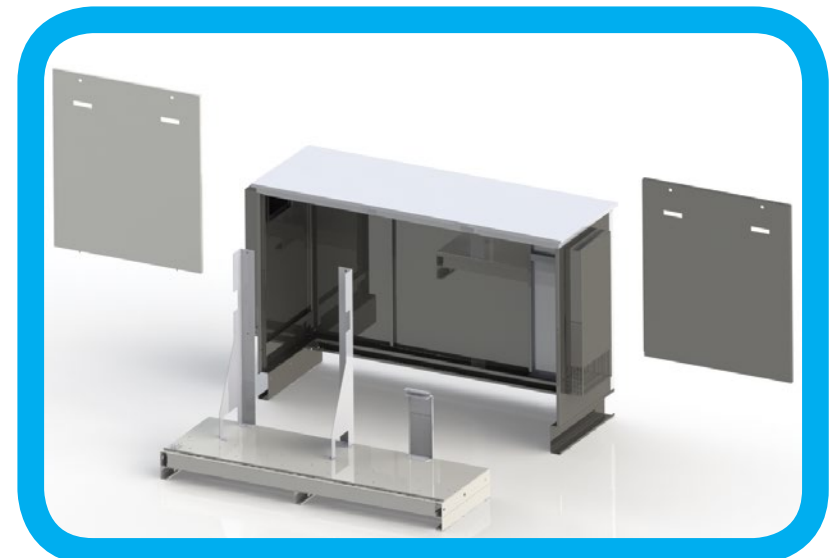


Type 1 'Plant Only' Enclosure with Removable Base

Description	Model Reference No.	External Dimentions (mm)			Overall size inc. Inlet/ extract ventilation baffles (mm)		No. of Doors	Extract Fans	Cost each (£) (ex works) 10 off
		Width	Depth	Height	Width	Depth			
2 Door	ABXC0071	2180	1000	1620	2430	1000	2	1	POA
3 Door	ABXC0012	2880	1000	1700	3005	1000	3	1	POA
3 Door Lift Off	ABXC0036	2180	750	1485	2430	750	3	1	POA
3 Door	ABXC0048	3540	1000	1700	3130	1000	3	2	POA

KEY PRODUCT FEATURES:

- CAD designed, CNC machined zintec coated steel with polyester powder coated finish
- Backward curve centrifugal fan(s) for forced ventilation
- Sloping roof with 25mm perimeter overhang
- High quality door furniture and removable door mullions for ease of plant installation.
- High density Class O rated acoustic foam
- Removable base to enable plant to be directly constructed on top, negating the need for a separate frame
- Double insulated base

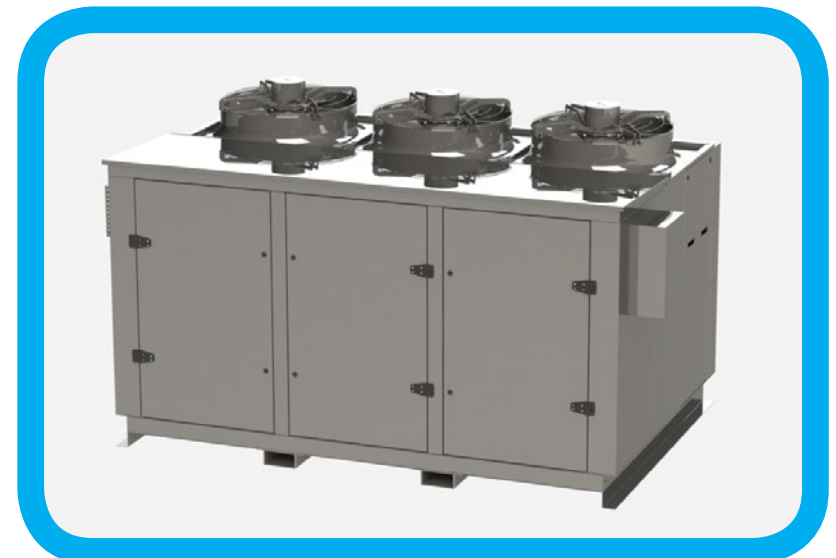


Type 3' Packaged Unit Housings with Integrated Condenser Coil and EC Fans

Description	Model Reference No.	External Dimentions (mm)			No. of Doors	800mm EC Fan Model (Ziehl Abegg)	Max Condenser Capacity kW THR			Extract Fans	Cost each (£) (ex works) 10 off
		Width	Depth	Height			10KΔT	11KΔT	13ΔT		
2 Fan	ABXC00132	2100	2000	1690	2	FN080.ZIQ.GG.V7	68.5	75.8	90	n/a	POA
3 Fan	ABXC00121	3000	2000	1690	3	FN080.ZIQ.GG.V7	91.2	100	120	n/a	POA
4 Fan	ABXC00129	4000	2000	1690	3	FN080.ZIQ.GG.V7	122	135	160	n/a	POA
5 Fan	ABXC00131	5000	2000	1690	4	FN080.ZIQ.GG.V7	153	168	201	n/a	POA

KEY PRODUCT FEATURES:

- Noise performance tested for compliance with DIN 3745 Class 1:
 - International Standard - 'AMCA 210 Accredited Laboratory' certified anechoic chamber
 - Air flow testing - DIN 24166 Class 1
 - In duct noise testing - DIN 5136
- World class Ziehl Abegg extract fans
- High quality condenser with copper tube/aluminium fin vinyl coated, as standard
- CAD designed, CNC machined zintec coated steel with polyester power coated finish
- Plant cavity with double insulated base, variable volume ventilation, a certified 'insertion loss' performance, sloping roof and rain gutter
- Mains incoming cable 'glanding' box
- High quality door furniture and removable door mullions for ease of plant installation



Type 4' Packaged Unit Housings with Integrated Condenser Coil and Fans

Description	Model Reference No.	External Dimentions (mm)			Overall size inc. Inlet/ extract ventilation baffles (mm)		Fan Type	Cost each (£) (ex works)
		Width	Depth	Height	Width	Depth		1 off
2 Fan 33kw	ABXC00154	1803	860	1698	1803	918	2x 630 A/C Fans	POA
2 Fan 45kw	ABXC00154	1803	860	1698	1803	918	2x 630 A/C Fans	POA
2 Fan 45kw with integral control panel	ABXC00159	2100	860	1698	2100	860	2x 630 A/C Fans	POA
2 Fan Low Height 90kw	ABXC0133 LH	2180	1200	2075	2430	1200	2x 800 EC Fans	POA
2 Fan 90kw*	ABXC00133	2180	1200	2500	2430	1200	2x 800 EC Fans	POA
3 Fan 67.5kw*	ABXC00139	3000	860	1698	3250	1200	3x 630 A/C Fans	POA
3 Fan 120kw*	ABXC00163	3000	1200	2075	3250	1200	3x 800 EC Fans	POA

KEY PRODUCT FEATURES:

- Compact footprint
- High quality condenser with copper tube/aluminium fin vinyl coated, as standard
- CAD designed, CNC machined zintec coated steel with polyester powder coated finish
- Sloping base under condenser with rain drip
- High quality heavy duty door furniture and removable door mullions for ease of plant installation
- All bases laid out with compressor fixings and control support panel brackets
- World class Ziehl Abegg fans as standard

* Denotes products with removable base for ease of plant build



14



Optional Extras

- Higher specification paint finish
- Increased acoustic performance
- Cu/Cu condenser coils
- Cu/Cu electro tin plated condenser coil for marine application
- Double insulated base
- Colour selection based on any RAL or BS Grade (standard colour BS00A05 Goose Grey in 60% gloss textured finish)
- High specification AV mounts
- Transport and cramage
- Onsite installation and assembly works
- Associated civil works i.e. concrete bases and foundation pads
- Structural steel work i.e. support frames, gantries and access stairs
- Non-standard sizes are available, price on request
- Ziehl Abegg ZA Plus or ebm-papst AxiTop fans

Prices on request



Prices on request

15



Box Clever Engineering Ltd Standard Terms and Conditions

Please read these terms and conditions carefully as they set out important provisions which will affect you and are deemed to form part of the Agreement. In particular please consider clause 10 (Extent of Liability).

1 DEFINITIONS

"We", "our" and "us" means the Box Clever Engineering Ltd and "you" and "your" means the person who buys or agrees to buy our Goods or Services. "Conditions" means the terms and conditions of sale set out in this document and any special terms agreed in writing by us. "Contract" means any contract for the sale of goods or supply of services by us to you. "Goods" means any goods forming the subject of the Contract including parts and components of or materials incorporated in them. "Services" means the services specified in the Contract and any installation or other work we undertake in respect of the Contract.

2 EXISTENCE OF CONTRACT

These Conditions shall apply to all contracts for sale or supply by us to you to the exclusion of all other terms and conditions including your own provided that any special conditions or terms set out in our quotation will prevail in the event of any inconsistency. Our quotations are invitations to treat not offers to contract and, unless otherwise stated, shall be deemed to be withdrawn after 30 days from issue. Your Order shall be deemed to be your offer to purchase subject to these Conditions and which we will only accept on these Conditions. Acceptance of delivery of Goods or supply of Services shall be deemed conclusive evidence of your acceptance of these Conditions. No variations or amendments of the Contract shall be binding on us unless confirmed by us in writing. The Contract is between us and you as principals and you shall not assign it without our express written consent. We may subcontract the performance of the Contract in whole or in part.

3 SPECIFICATION

Our Goods and Services shall accord with such specifications or descriptions (if any) expressly stated in our quotation. No other specification, descriptive material, written or oral representation, correspondence or statement, promotional or sales literature shall form part of or be incorporated by reference into the Order. We reserve the right without notice to change the specification of the Goods but not so as to materially affect their quality or fitness for purpose.

4 PRICES and PAYMENT

The Price shall be our quoted price (as confirmed in our standard order acceptance form and/or invoice) plus VAT and carriage. We reserve the right to revise the Price at any time prior to delivery to take account of any increase in our direct or indirect costs. TIME FOR PAYMENT SHALL BE OF THE ESSENCE OF THE CONTRACT. YOU MUST PAY THE PRICE WITHOUT ANY DEDUCTIONS WITHIN 30 DAYS FROM THE DATE OF INVOICE FAILING WHICH YOU SHALL PAY INTEREST ON A DAILY BASIS AT A RATE OF 1.25% PER MONTH ON ANY OVERDUE AMOUNT FROM THE DATE PAYMENT FALLS DUE TO THAT ON WHICH IT IS RECEIVED BY US (WHETHER BEFORE OR AFTER JUDGMENT) AND REIMBURSE TO US ALL COSTS AND EXPENSES (INCLUDING LEGAL COSTS) INCURRED IN THE COLLECTION OF ANY OVERDUE AMOUNT. If at any time we reasonably believe that payment will not be made on the due date then we may demand payment on delivery or other security satisfactory to us. We may at our discretion suspend the supply of any Goods or Services or treat the Contract and any other agreement with us as terminated if you fail to make

any payment when and as due or otherwise default in any of your obligations under the Contract or any other agreement with us or become insolvent, have a receiver appointed or are compulsorily or voluntarily wound up or we bona fide believe that any of those events may occur. In the event of such termination all monies due under any transaction covered by these Conditions shall become immediately due and payable.

5 DELIVERY

Goods are delivered to you when we make them available to you or your agent or carrier at our premises or other delivery point agreed by us. We may at our discretion deliver the Goods by instalments in any sequence and each instalment shall be deemed to be the subject of a separate contract and no default or failure by us in respect of any one or more instalments shall vitiate the Contract in respect of the Goods previously delivered or undelivered Goods. We may deliver to you and you shall accept in satisfaction of the Contract a lesser number than the number of Goods ordered. Any dates quoted by us for the delivery of the Goods are approximate only and shall not form part of the Contract and you acknowledge that in the performance expected of us no regard has been paid to any quoted delivery dates. You shall make all arrangements necessary to take delivery of the Goods whenever they are tendered for delivery. If we agree to deliver, we shall be entitled to deliver the Goods (or any of them) to the agreed delivery point during normal working hours 8.00am to 5.00pm on the due date. If you fail to take delivery of the Goods (or any of them) on the due date or fail to provide any necessary instructions or authorisations so as to enable the Goods to be delivered on the due date, then we shall be entitled to store or arrange for the storage of the Goods (in which event delivery shall be deemed to have taken place and risk in the Goods shall pass to you) and/or to re-deliver the Goods and you shall pay to us all costs and expenses including storage and re-delivery charges arising from your failure. We shall not be liable for any loss or damage whatever arising from any failure by us to deliver the Goods (or any of them) promptly or at all and notwithstanding any such delay or failure you shall be bound to accept delivery and to pay for the Goods in full provided that delivery shall be tendered at any time within 3 months of the delivery date.

6 RISK AND ACCEPTANCE

Risk in the Goods passes when they are delivered to you. You shall be deemed to have accepted the Goods on delivery. After acceptance you shall not be entitled to reject Goods which are not in accordance with the Contract nor, without our prior written approval and on terms to be determined (if at all) at our absolute discretion, cancel the Contract or return any Goods which are in accordance with the Contract.

7 TITLE

We warrant that we have an unencumbered right to sell the Goods. Notwithstanding the earlier passing of risk, title in the Goods shall remain with us and shall not pass to you until we receive full payment for them. Until title to the Goods passes, you shall hold the Goods as our bailees and shall store or mark them so that they can at all times be identified as our property. We shall be entitled at any time before title passes to repossess and dismantle (without being liable for any damage caused by so doing) and use or sell all or any of the Goods and so terminate (without any liability to you) your right to use,

sell or otherwise deal in them and for that purpose or determining what if any Goods are held by you and inspecting them to enter any of your premises. Until title passes the entire proceeds of sale of the Goods shall be held in trust for us and shall not be mixed with other monies or paid into any overdrawn bank account and shall be at all times identifiable as our money. We shall be entitled to sue you for the price of any Goods notwithstanding that title in them has not passed to you.

8 CLAIMS NOTIFICATION

You must notify us in writing of any claim for non-delivery of any Goods within 10 days of the date of our invoice. In any event, a clear signature on a carrier's delivery advice sheet shall be deemed to signify receipt of the quantity of Goods indicated on the advice sheet. You shall inspect the Goods on delivery and shall within 3 days of delivery notify us by telephone and in writing of any alleged defect, shortage in quantity, damage or failure to comply with description. You shall then allow us to inspect the Goods within a reasonable time following delivery and before any use is made of them. You shall notify us in writing of any defect which is not reasonably apparent on delivery within 7 days of the defect coming to your attention and in any event within 3 months from the date of delivery. We shall not be liable for any claim in respect of which you have not complied with any of the provisions of condition 8.

9 SCOPE OF CONTRACT

Under no circumstances shall we have any liability of whatever kind for: (a) any defects resulting from wear and tear accident improper use by you or use by you otherwise than in accordance with the instructions or advice of ourselves or the manufacturer of any Goods or neglect or from any instructions or materials provided by you; (b) any defect arising from any design or specification provided or made by you or any Goods which have been adjusted modified or repaired otherwise than by us; (c) the suitability of any Goods for any particular purpose or use under specific conditions whether or not the purpose or conditions were known or communicated to us; (d) any substitution by us of any materials or components not forming part of any specification of the Goods agreed in writing by us; (e) any descriptions, illustrations, specifications, figures as to performance, drawings and particulars of weights and dimensions submitted by us contained in our catalogues, price lists or elsewhere since they are merely intended to represent a general idea of the Goods and not to form part of the Contract or be treated as representations; (f) any technical information recommendations statements or advice furnished by us or our agents not given in writing in response to a specific written request from you before the Contract is made; or (g) any variations in the quantities or dimensions of any Goods or changes of their specifications or substitution of any materials or components, if the variation or substitution does not materially affect the characteristics of the Goods, and the substituted materials or components are of a quality equal or superior to those originally specified.

10 EXTENT OF LIABILITY

Nothing in the Contract shall restrict or exclude liability for death or personal injury caused by our negligence or affect the statutory rights of a buyer dealing as a consumer as defined in the Unfair Contract Terms Act 1977 section 12. We shall have no liability to you for any loss or damage of any nature

arising from any breach of any express or implied warranty or condition of the Contract or any negligence, breach of statutory or other duty on our part or in any other way out of or in connection with the performance or purported performance of or failure to perform the Contract except in accordance with this condition. If in compliance with condition 8 you establish that any Goods have not been delivered, have been delivered damaged, are not of the correct quantity, do not comply with their description or are defective by reason of our faulty workmanship, materials or design, we shall at our option replace or repair such Goods or credit you for their value. Where we are liable in accordance with this condition in respect of only some or part of the Goods the Contract shall remain in full force and effect in respect of the other or other parts of the Goods and no setoff or other claim shall be made by you against or in respect of such other or other parts of the Goods. We shall not be liable where any Goods the price of which does not include carriage are lost or damaged in transit and all claims by you shall be made against the carrier. Replacements for such lost or damaged Goods will, if available, be supplied by us at the prices ruling at the date of despatch. Our liability to you, whether for any breach of the Contract or otherwise, shall not in any event exceed the Price and we shall be under no liability for any direct loss and/or expense or indirect loss or expense suffered by you or liability to third parties incurred by you.

11 INTELLECTUAL PROPERTY AND CONFIDENTIALITY

No trade mark other than those applied by us may be marked on or applied in relation to the Goods. The specifications and designs of the Goods (including the copyright, design right or other intellectual property in them) shall as between the parties be our property. The Contract grants no right or license under any patent, trade mark, registered design or other intellectual property right except the right to use or resell the Goods. The Contract and its subject matter are confidential and shall not be disclosed or used for any unauthorised purpose.

12 GENERAL

All headings are for convenience of reference only and shall not affect the construction of the Contract. We shall not be liable for any failure in the performance of any of our obligations under the Contract caused by factors outside our control. No waiver or forbearance by us (whether express or implied) in enforcing any of our rights under the Contract shall prejudice our rights to do so in the future. Any provision of the Contract which is or may be void or unenforceable shall to the extent of such invalidity or enforceability be deemed severable and shall not affect any other provisions of the Contract. Any notice to be given under the Contract shall be in writing and served by first class prepaid recorded delivery letter post to the receiving party at its business address as last notified in writing to the other party and shall be deemed to have been given on the day after the notice was posted. The Contract is subject to the law of England and Wales and the parties submit to the exclusive jurisdiction of the English Courts. These conditions supersede all our previous conditions of sale.



Box Clever Engineering Ltd 60 Churchill Square, Business Centre, Kings Hill, West Malling, Kent ME19 4YU
Phone: + 44 (0)1732 523 550 Fax: + 44 (0)1732 523 404 Email: info@boxcleverengineering.co.uk

www.boxcleverengineering.co.uk